



### OFTR Series **NEW** Polyurethane Discharge Hose

#### General Applications:

- Dewatering
- Fluid transfer (see chemical chart)
- Large volume water transfer including fracking
- Manure transfer
- Mining

#### Construction:

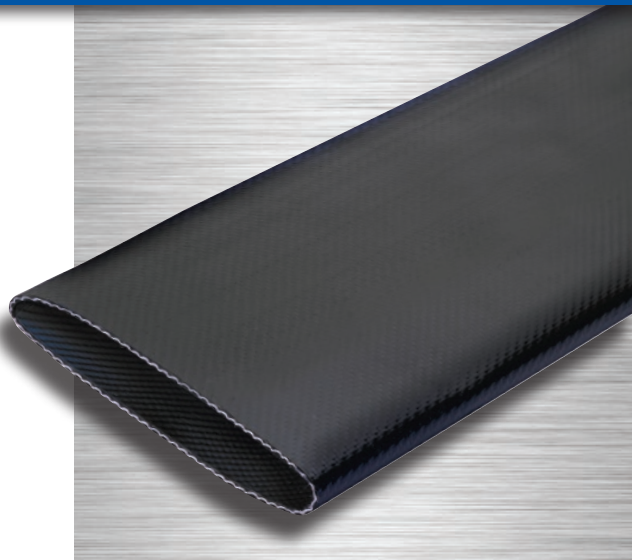
Black polyurethane (TPU) hose using an extruded through-the-weave process with circular woven high tenacity polyester reinforcement.

#### Service Temperature Range:

-58°F (-50°C) to +122°F (+50°C)

#### Features and Advantages:

- **Premium Polyurethane (TPU) Material** – Exhibits exceptional resistance to abrasion, allowing for use in applications where severe abrasion is a factor and providing longer service life versus rubber or PVC hoses. Also, exhibits exceptional resistance to oils and petroleum based products.
- **Unique Woven Construction** – Specially designed weave pattern provides resistance to snaking, kinking, stretching and twisting.
- **Longer Lengths** – Manufactured in special 660 foot lengths to reduce possible leaking points.
- **Smooth TPU Tube** – Provides low friction loss.
- **Compact Design** – Flat hose design rolls up into tight coils for easy storage and transport, takes up less space than other hoses.



### Nominal Specifications

Series Number	Size		Hose ID		Wall Thickness (in)	Working Pressure (psi) at 68°F	Burst Pressure (psi) at 68°F	Coil Length (ft)	Tensile Strength (lbs)	Weight (lbs/ft)
	(in)	(mm)	(in)	(mm)						
OFTR-800	8	203.2	8.098	205.7	0.165	203	600	660	81,571	2.08
OFTR-1000	10	254.0	10.098	256.5	0.169	203	500	660	100,310	2.76
OFTR-1200	12	304.8	12.098	307.3	0.185	174	435	660	121,254	3.43

Because we continually examine ways to improve our products, we reserve the right to alter specifications or discontinue products without prior notice.